



Horsmonden
Primary Academy



Prospectus

Happiness | Kindness | Success

Horsmonden Primary Academy is part of Leigh Academies Trust



Leigh Academies Trust is one of the country's largest and most-established multi-academy trusts operating across Kent, Medway and South East London. It contains primary, secondary and special academies and is highly inclusive and successful. Our mission is to deliver "education for a better world" by ensuring that young people in our academies have an excellent start in life regardless of their background or ability.

Our Values

We care - about our pupils and their families through our human scale approach to education, our staff and their well-being and the world around us, driven by our high ideals and strong moral values.

We have boundless ambition - to achieve excellence for all and create confident young adults with high levels of resilience and integrity.

We work together - as one team because we are greater than the sum of our parts. We foster an enterprising culture through global collaboration with partners in business and education.

We keep getting better - using our 'can-do' attitude and research informed approach to continuous improvement and innovation.

For admission enquiries telephone: 01892 722 529 or email: office@horsmondenprimaryacademy.org.uk



Contents

Use our contents page to navigate your way through our prospectus

Principal's welcome

A message from Hayley Sharp

Our vision and values

About us

Our environment

Making the most of our academy, as well as our latest equipment

The International Baccalaureate Primary Years Programme

We follow the IB PYP specifically designed for pupils aged 3-12

The International Baccalaureate Learner Profile

Giving pupils the opportunity to develop their personal and social attributes throughout their primary education

Our curriculum

What we have to offer

Our enriching curriculum

School trips

Inclusive environment

Our response to students with Special Educational Needs (SEN)

Wrap around care

Breakfast and After School Clubs

Further information

Visit our website

Welcome



'My daughter absolutely loves the teacher, and really enjoys learning in school. She makes the lessons extremely engaging and fun, and my daughter appears to be thriving.'

Parent

Happiness, Kindness, Success.

Welcome to Horsmonden Primary Academy

It gives me great pleasure to welcome you to Horsmonden Primary Academy where we develop inquiring, knowledgeable, caring individuals and encourage lifelong learning. It is important to us that children are fully prepared for life outside Horsmonden and that journey starts the minute they walk through our doors.

When a child begins their education with us our caring staff team work hard to get to know the children, making them feel safe and developing their independence. In turn children are ready and eager to learn. Staff value each and every child, all our efforts revolve around the achievement of each child's potential: academically, socially and emotionally.

At Horsmonden children are encouraged to think for themselves and we believe a creative, inquiry based approach to learning and teaching allows children to flourish in their own individual ways. This is why children enjoy coming to Horsmonden Primary Academy. Learning is fun and children's achievements are celebrated at every opportunity. When children are happy, feel safe and encouraged to be themselves, they learn best.

Hayley Sharp
Principal

Happiness, Kindness, Success.

‘The leadership and teaching
is second to none.’

Parent

our VISION

At Horsmonden we have developed a friendly, caring and thoughtful atmosphere that has evolved through the use of the words “**Happiness, Kindness, Success**”. This motto is integral to our school history and ethos. As we move towards becoming an IB school, these words have helped shape our vision for the future.

At Horsmonden Primary Academy our aim is to encourage lifelong learning and develop inquiring, knowledgeable caring individuals that understand the world around them while demonstrating respect.

our VALUES

The 10 Learner Profile Attributes from the International Baccalaureate Primary Years Programme form our 10 core values. They are developed throughout a child’s time at Horsmonden Primary Academy and represent the capacities and responsibilities for intellectual, personal, emotional and social growth.

As IB learners we strive to be:

- Inquirers
- Knowledgeable
- Thinkers
- Communicators
- Principled
- Open-minded
- Caring
- Risk-takers
- Balanced
- Reflective



OUR ENVIRONMENT

At Horsmonden Primary Academy we make the most of learning both inside and outside of the classroom. Inside, our 7 classrooms are bright and airy with the latest touch screen technology. We also benefit from having a large research centre, SEN Hub, children's kitchen area as well as a large school hall. Children have access to the latest Chromebooks to complement their learning in the classroom and teachers can book a variety of IT equipment from the Trust Head Office, such as VR headsets.

Outside, there is plenty of space for the children to learn and play. We are developing a dedicated outdoor woodland area, as well as having a nature pond, two purpose built play areas and a large playground and field.



'I am bowled over at the exemplary efforts of your teaching staff to provide a first class learning experience to the children during home-schooling.'

Parent

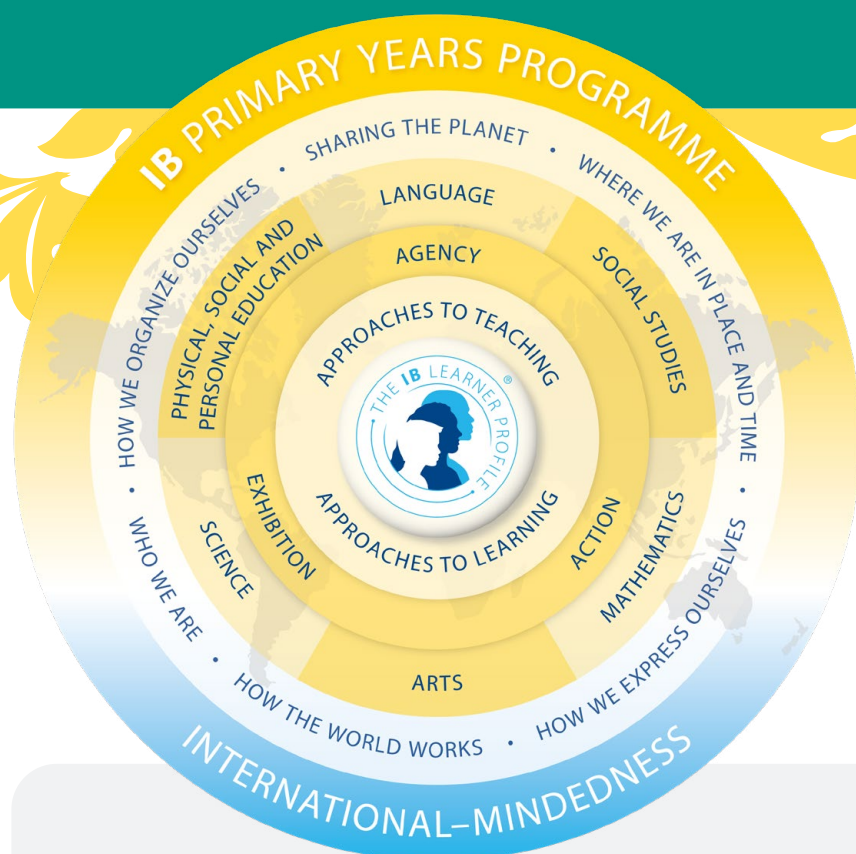
Happiness, Kindness, Success.

The International Baccalaureate Primary Years Programme



© International
Baccalaureate
Organisation
2018

The Primary Years Programme (PYP) is designed for pupils aged 3 to 12 and is one of four programmes offered by the International Baccalaureate Organisation (IBO).



The PYP focuses on the development of the whole child as an inquirer, both in the classroom and in the world outside. It is a framework guided by six transdisciplinary themes of global significance, explored using knowledge and skills derived from six subject areas, as well as transdisciplinary skills, with a powerful emphasis on inquiry.

The PYP is flexible enough to accommodate the demands of the National Curriculum as this is the curriculum that Horsmonden Primary Academy will follow. The PYP:

- Allows integrated development of cognitive and affective skills;
- Enables us to develop a curriculum appropriate to meet pupils learning needs;
- Develops autonomous and critical learners;
- Content is chosen by academies but is delivered within a concept driven curriculum to bring coherence across subjects; and
- Assessment drives learning and teaching positively.

Horsmonden Primary Academy is a Candidate School* for the Primary Years Programme. This school is pursuing authorization as an IB World School. These are schools that share a common philosophy—a commitment to high quality, challenging, international education that Horsmonden Primary Academy believes is important for our students.

**Only schools authorized by the IB Organization can offer any of its four academic programmes: the Primary Years Programme (PYP), the Middle Years Programme (MYP), the Diploma Programme, or the Career-related Programme (CP). Candidate status gives no guarantee that authorization will be granted. For further information about the IB and its programmes, visit www.ibo.org*

The International Baccalaureate Learner Profile



The Learner Profile is at the heart of our curriculum and is integrated through every aspect of the curriculum, so that pupils have the opportunity to develop their personal and social attributes on a daily basis.

Inquirers

We nurture our curiosity, developing skills for inquiry and research. We know how to learn independently and with others. We learn with enthusiasm and sustain our love of learning throughout life.

Knowledgeable

We develop and use conceptual understanding, exploring knowledge across a range of disciplines. We engage with issues and ideas that have local and global significance.

Thinkers

We use critical and creative thinking skills to analyse and take responsible action on complex problems. We exercise initiative in making reasoned, ethical decisions.

Communicators

We express ourselves confidently and creatively in more than one language and in many ways. We collaborate effectively, listening carefully to the perspectives of other individuals and groups.

Principled

We act with integrity and honesty, with a strong sense of fairness and justice, and with respect for the dignity and rights of people everywhere. We take responsibility for our actions and their consequences.

Open-minded

We critically appreciate our own cultures and personal histories, as well as the values and traditions of others. We seek and evaluate a range of points of view, and we are willing to grow from the experience.

Caring

We show empathy, compassion and respect. We have a commitment to service, and we act to make a positive difference in the lives of others and in the world around us.

Risk-takers

We approach uncertainty with forethought and determination; we work independently and cooperatively to explore new ideas and innovative strategies. We are resourceful and resilient in the face of challenges and change.

Balanced

We understand the importance of balancing different aspects of our lives—intellectual, physical, and emotional—to achieve well-being for ourselves and others. We recognize our interdependence with other people and with the world in which we live.

Reflective

We thoughtfully consider the world and our own ideas and experience. We work to understand our strengths and weaknesses in order to support our learning and personal development.

Our curriculum

‘Thank you to all the staff at the school for your efforts. The management of the home learning has been excellent.’

Parent

Intent

At Horsmonden Primary Academy, we believe that all children are entitled to a curriculum that provides them with the knowledge and skills that are essential to develop them as lifelong learners, regardless of any disability or special educational need. Our curriculum is broad and balanced, and provides learning opportunities that are well planned and sequenced in a way that builds on previous learning. It encourages children to take ownership of their learning and to consider connections between themselves and others, and the world around them.

Implementation

Our curriculum intent is implemented to meet the requirements of the 2014 National Curriculum to ensure that our children's entitlement is fulfilled.

This is done within the framework of the International Baccalaureate Primary Years Programme (IB PYP). It focuses on the development of the whole child as an inquirer, both in the classroom and the world outside. This framework is guided by six transdisciplinary themes of global significance, explored using knowledge and skills with a powerful emphasis on inquiry.

Children have their own voice, choice and ownership over which direction their learning will take in response to the central idea. They are drivers of their own learning in the classroom and beyond. Within the context of the central ideas, children learn how to demonstrate and recognise 10 key learner attributes. The attributes encourage learners to be inquirers, knowledgeable, thinkers, communicators, principled, open-minded, caring, risk-takers, balanced and reflective.

Children take part in memorable, rich learning experiences, where they develop a range of transferable skills. Extra curricular opportunities enhance this and further extend the range of children's experiences to deepen and broaden their understanding.

Where explicit skills teaching is necessary, for example in reading and phonics, it is done through discrete sessions which are then embedded and applied through the lines of inquiry. Mathematics skills are taught in this way and framed by the White Rose Maths Hub. Using this approach for specific skills develops a strong foundation in the different mathematical concepts meaning children can apply mathematical skills confidently to a range of problems across the curriculum and varying lines of inquiry.

Children learn through a collaborative approach and opportunities are given to allow them ownership of their learning facilitated and guided by highly effective classroom practitioners. Long-term memory, recall and application is enhanced through low stakes testing and critical thinking. Pupils will progressively learn techniques and strategies for completing tests and assessments, including Government statutory assessments, as they continue through the school, mastering previously learned skills and acquiring new ones as appropriate. Active learning increases the focus and retention of the curriculum, resulting in an exciting learning environment and a positive relationship with the content.

Continued on next page...

Impact

As a result of our carefully planned and sequenced curriculum, our children will have confidence and knowledge to shape informed opinions about subjects, current affairs and the world around them. They will be able to make links across the curriculum as well as their lines of inquiry. Through their understanding of each National Curriculum subject, they will be able to identify and apply skills learned across a range of contexts.

Children will live and breathe the 10 key learner attributes and strive to be the best versions of themselves. Achievements will be celebrated and high expectations set to ensure all children reach their full potential.

Happiness,
Kindness,
Success.

Our enriching curriculum

At Horsmonden we believe that children benefit significantly from visiting places of interest to deepen their learning and broaden their horizons.

The types of places that children from Horsmonden Primary Academy visit are: museums, zoos, theatres, sports venues, London, activity centres and beaches as examples.

In May 2019 Horsmonden started a new venture for Year 6 children and spent a week in Paris. Children toured the city taking in all the sights, spent a day in Disney and spoke French at every opportunity.



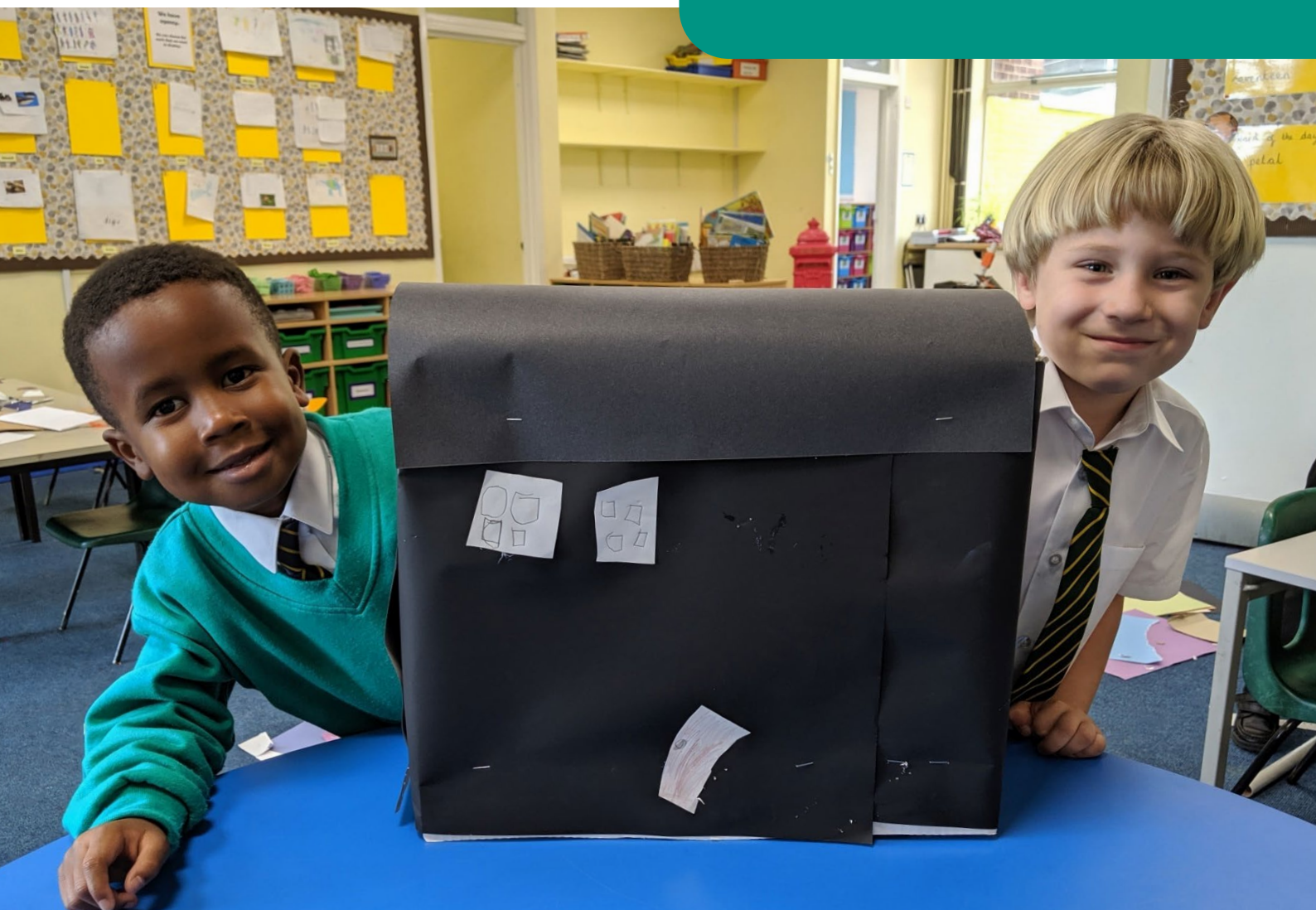
Inclusive environment

Every child at Horsmonden Primary Academy has the right to achieve his/her full potential. We recognise that all children have their own particular needs and we seek to ensure that each child is able to learn, experience success and feel valued in an environment free from obstacles and prejudice.

If a teacher or parent believes there may be a difficulty that has not been previously identified, they can speak to the SENCo by appointment. The SENCo will then examine the most recent learning data, speak to all relevant staff and may commission additional assessments/investigations. The views of parents are important to us and vital in this process.

Wrap around care

Horsmonden Primary Academy benefits from having a well run and established Breakfast and After School Club where children can play, relax or continue their learning. Breakfast and a light snack is provided and drop off and collection times are flexible.





'I just wanted to write and say a very big thank you and to let you know really how fantastic your teachers are.'

Parent



We hope you've enjoyed reading through our Primary prospectus and we can't wait to hear from you!
e: office@horsmondenprimaryacademy.org.uk



Happiness,
Kindness,
Success.



Horsmonden
Primary Academy

Further INFORMATION

Please visit our academy website:

[Horsmonden Primary Academy](#)

Admissions information

Find out when our next open event is:

[Visit our website](#)

School Uniform

Please visit us to see more information:

[Visit our website](#)



Horsmonden Primary Academy
Back Lane
Horsmonden
Kent TN12 8NJ

01892 722 529
office@horsmondenprimaryacademy.org.uk
horsmondenprimaryacademy.org.uk

Happiness | Kindness | Success



Education for a better world

Chief Executive: Simon Beamish BA (Hons) MSc PGCE NPQH NLE FCCT
Carnation Road, Strood, Rochester, Kent ME2 2SX
01634 412200 | fax: 01634 412201
info@latrust.org.uk | leighacademiestrust.org.uk

Leigh Academies Trust is a registered company (company no 2336587) and an exempt charity.